

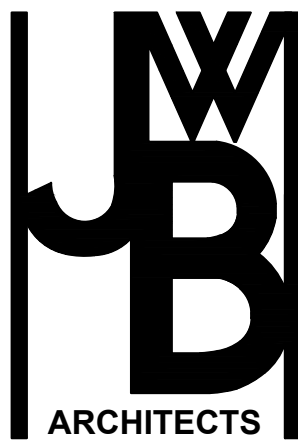
SHELL BUILDING ONLY

2020 11 0224

PLANTATION PLAZA

HWY 27

LEESBURG, FLORIDA



ARCHITECT

JWB ARCHITECTS
2295 S HIAWASSEE RD
SUITE 304
ORLANDO, FLORIDA 32835
407.298.5020

SHEET INDEX

COVER SHEET

ARCHITECTURAL

- A001 ARCHITECTURAL SITE PLAN
- A002 ENLARGED SITE PLAN
- A003 SITE DETAILS
- A101 OVERALL FLOOR PLAN
- A102 OVERALL REFLECTED CEILING PLAN
- A103 ROOF PLAN
- A200 LIFE SAFETY PLAN
- A201A MAIN FLOOR PLAN - AREA A
- A201B MAIN FLOOR PLAN - AREA B
- A202A REFLECTED CEILING PLAN - AREA A
- A202B REFLECTED CEILING PLAN - AREA B
- A301 ELEVATIONS
- A302 ELEVATIONS
- A303 ELEVATIONS
- A401 SECTIONS
- A402 SECTIONS
- A403 SECTIONS
- A404 SECTIONS
- A501 SCHEDULES AND DETAILS

STRUCTURAL

- S1 FOUNDATION PLAN
- S1.1 FOUNDATION PLAN
- S2 ROOF FRAMING PLAN
- S2.1 ROOF FRAMING PLAN
- S3 UPPER ROOF PLAN
- S3.1 UPPER ROOF PLAN
- S4 FOUNDATION DETAILS
- S5 DETAILS & SECTIONS
- S6 DETAILS & SECTIONS
- S7 DETAILS & SECTIONS
- S8 NOTES

MECHANICAL

- M100 LEGEND AND NOTES - HVAC
- M201 FLOOR PLAN - HVAC
- M301 DETAILS - HVAC

PLUMBING

- P100 LEGEND, NOTES AND SCHEDULES - PLUMBING
- P201 PLUMBING PLAN

ELECTRICAL

- E100 ELECTRICAL LEGEND, NOTES & SPECS
- E200 LIGHTING PLAN
- E300 POWER PLAN
- E400 RISER & PANEL SCHEDULES

CODE INFORMATION

PROJECT SQUARE FOOTAGE:

TOTAL SQUARE FOOTAGE : 19,829 SQFT
NET RENTABLE AREA : 18,053 SQFT

CONSTRUCTION TYPE:

TYPE II-B - (SPRINKLERED)

OCCUPANCY:

B-BUSINESS

APPLICABLE BUILDING CODES:

- 2017 FBC, 6TH EDITION, BUILDING
- 2017 FBC, 6TH EDITION, EXISTING BUILDING
- 2017 FBC, 6TH EDITION, ACCESSIBILITY
- 2017 FBC, 6TH EDITION, MECHANICAL
- 2017 FBC, 6TH EDITION, PLUMBING
- 2017 FLORIDA FIRE PREVENTION CODE 6TH EDITION
- 2014 NATIONAL ELECTRIC CODE

SCOPE OF WORK:

SCOPE OF WORK CONSIST OF A NEW CMU EXTERIOR WALL BUILDING (SHELL ONLY) WITH PLUMBING STUB-UPS FOR FUTURE UPFIT. NO INTERIOR WALL OR FLOOR FINISHES TO BE APPLIED.

GENERAL SPECIFICATION:

THE GENERAL CONTRACTOR SHALL SECURE ALL PAINT COLORS PLASTIC LAMINATE COLORS FLOOR FINISH COLORS AND TYPE FROM THE OWNER.
THE GENERAL CONTRACTOR SHALL VISIT THE PROJECT SITE AND FAMILIARIZE HIMSELF WITH ALL THE EXISTING CONDITIONS.
ALL DIMENSIONS SHALL BE CALCULATED AND DRAWINGS SHALL NOT BE SCALED. QUESTIONS CONCERNING DIMENSIONING SHALL BE REFERRED TO THE ARCHITECT.
ALL WORK SHALL BE PERFORMED IN ACCORDANCE WITH ALL CODES HAVING JURISDICTION OVER HIS PROJECT.
ALL WORK SHALL BE PERFORMED IN ACCORDANCE WITH THE AIA DOCUMENT A205 1993 EDITION GENERAL CONDITIONS OF THE CONTRACT FOR CONSTRUCTION OF A SMALL PROJECT.
FLOOR CONSTRUCTION SEE SHELL BUILDING PERMITTED DRAWINGS - BUILDING 12, SHEET S-1 FOUNDATION PLAN.
PROVIDE MOISTURE AND HEAT MITIGATION WITHIN SUITE DURING SLAB CURING TIME PERIOD.
INSTALL WOOD BLOCKING SUFFICIENT TO CARRY THE LOADS APPLIED BY GRAB BARS HANGING CABINETS PLUMBING FIXTURES OR ANY SUCH APPLIED EQUIPMENT.

A. ROUGH CARPENTRY

1. WHERE INSTALLING BLOCKING FOR EQUIPMENT TO BE INSTALLED BY OTHERS WHERE LOCATIONS ARE NOT SUFFICIENTLY INDICATED ON DRAWINGS VERIFY THE EXACT LOCATION WITH THE ARCHITECT.
2. ROUGH HARDWARE: PROVIDE AND INSTALL ALL ROUGH HARDWARE AND METAL FASTENINGS OF SIZE AND TYPE REQUIRED FOR PROPER INSTALLATION AND CODE APPROVAL. ALL ROUGH HARDWARE SHALL EXCEED THE STRENGTH OF THE MEMBER ATTACHED.
5. ALL CONCEALED WOOD SHALL BE FIRE RESISTANT TREATED AS REQUIRED BY FBC CODE.

B. FINISH CARPENTRY & MILLWORK

1. FABRICATION AND INSTALLATION OF ALL CORNICE, MILLWORK, TRIM, PANELING AND MOLDING WORK.
2. FURNISHING DOORS, WOOD TRIM AND FRAMES. AS SPECIFIED IN THE DOOR SCHEDULE.

C. INSTALLATION

1. ALL MOLDED MEMBERS AND TRIM SHALL BE MITERED AT OUTSIDE OR COPED AT INSIDE CORNERS.
2. SCRIBING MITERING AND JOINING SHALL BE COMPLETED ACCURATELY, NEATLY, AND TIGHT, REQUIRING NO OR VERY LITTLE FILLING.
3. APPLY DOOR HARDWARE IN ACCORDANCE WITH MANUFACTURER'S INSTRUCTIONS FIT ACCURATELY, APPLY SECURELY AND ADJUST CAREFULLY.

D. GYPSUM WALLBOARD ASSEMBLIES

1. REFER TO WALL TYPES FOR ALL ASSEMBLIES OF WALLS
2. INSTALL ACCORDING TO MANUFACTURER'S INSTRUCTIONS.
3. TILED OR WET AREAS TO HAVE WATER RESISTANT 5/8" GYP. BD.
4. FINISH JOINTS AND WALLHEADS WITH 3 COAT PERF-A-BEAD TAPE JOINT SYSTEM PROPERLY SANDED SCHEDULE. PERF-A-BEAD AT ALL EXTERNAL CORNERS OF 120 DEGREES OR GREATER. DURA-BEAD AT ALL 90 DEGREE EXTERNAL CORNERS - NO. 200 A TRIM AT DISSIMILAR MATERIALS.

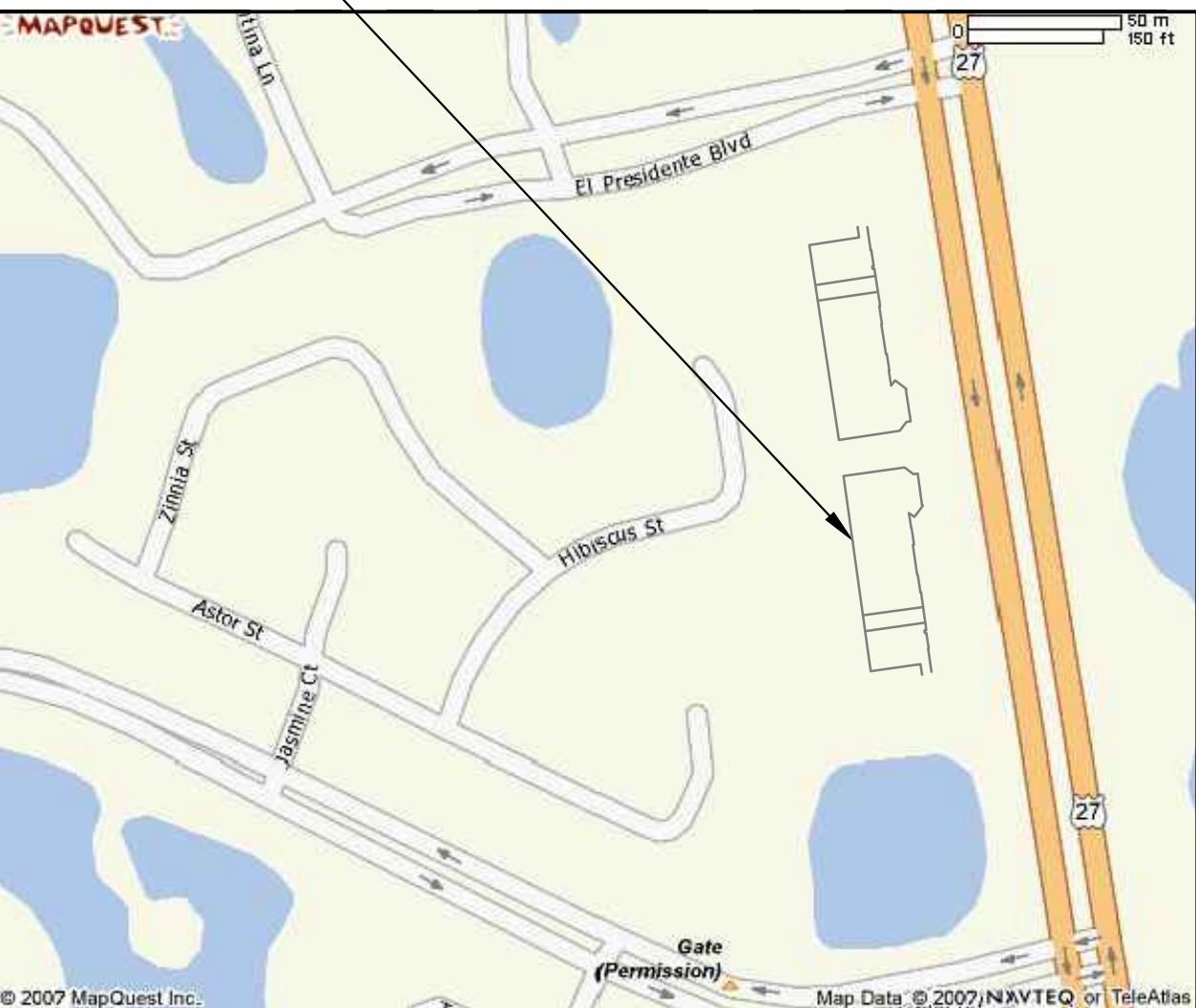
E. PAINTING

1. ALL COLORS AS SPECIFIED IN THE FINISH SCHEDULE.
2. ALL MANUFACTURERS SPECIFIED ARE TO ESTABLISH COLOR, QUANTITY AND TYPE OF FINISH. COMPARABLE PRODUCTS OF OTHER MANUFACTURERS WILL BE FULLY CONSIDERED WITH APPROPRIATE SUBMITTALS. ALL PRODUCTS MUST BE MANUFACTURERS 1ST LINE QUALITY.
3. GYP. BD. WALL - LAVATORIES ONLY
 - a. 1ST COAT - OLYMPIC, PRIMER/SEALER, TINT TO FINISH COLOR
 - b. 2ND COAT - OLYMPIC, EGGSHELL ENAMEL, COLOR AS SPECIFIED
4. GYP. BD. WALLS, SOFFITS, BULKHEADS, ETC.
 - a. 1ST COAT - OLYMPIC, LATEX OR ACRYLIC PRIMER/SEALER, TINT TO FINISH COLOR
 - b. 2ND COAT - OLYMPIC, EGGSHELL ENAMEL, COLOR AS SPECIFIED
5. GYP. BD. WALL AND CEILING - RECEPTION, CORRIDOR, RESTROOM, SHOWER, AND STEAM ROOM
 - a. 1ST COAT - SHERWIN WILLIAMS, LATEX OR ACRYLIC PRIMER/SEALER, TINT TO FINISH COLOR
 - b. 2ND COAT - SHERWIN WILLIAMS, LATEX, HIGH-GLOSS, OR AS NOTED, COLOR AS SPECIFIED

4. WOODWORK AND TRIM
 - a. 1ST COAT - ENAMEL UNDERCOAT
 - b. 2ND COAT - STAIN FINISH, COLOR AS SPECIFIED. SAND BETWEEN COATS AND CLEAN THOROUGHLY
5. DOORS
 - a. 1ST COAT - STAIN COLOR - MATCH ARCHITECTS SAMPLE
 - b. 2ND COAT - SEALER, SAND
 - c. 3RD COAT - GLOSS SEALER, SAND
 - d. 4TH COAT - SATIN FINISH COAT
6. APPLICATOR MUST EXAMINE AREAS AND CONDITION UNDER WHICH PAINTING WORK IS TO BE APPLIED AND NOTIFY CONTRACTOR IN WRITING OF CONDITIONS DETRIMENTAL TO PROPER AND TIMELY COMPLETION OF WORK. DO NOT PROCEED WITH WORK UNTIL UNSATISFACTORY CONDITIONS HAVE BEEN CORRECTED. PROTECT CARPET AND OTHER FINISHES FROM SPILL AND SPATTERS.
7. DO NOT PAINT OVER DIRT, RUST, SCALE, GREASE, MOISTURE, DEFECTS OR CONDITIONS OTHERWISE DETRIMENTAL TO FORMATION OF A DURABLE, UNWARRIED, UNBLEMISHED PAINT FILM.
8. PERFORM PREPARATION AND CLEANING PROCEDURES IN ACCORDANCE WITH PAINT MANUFACTURERS INSTRUCTIONS AND AS HEREIN SPECIFIED FOR EACH PARTICULAR SUBSTRATE CONDITION.
9. REMOVE HARDWARE, HARDWARE ACCESSORIES, PLATE, LIGHTING FIXTURES, AND SIMILAR ITEMS IN PLACE AND NOT TO BE FINISH PAINTED OR PROVIDE SURFACE APPLIED PROTECTION PRIOR TO SURFACE PREPARATION AND PAINTING OPERATIONS. REMOVE IF NECESSARY FOR COMPLETE PAINTING OF ITEMS AND ADJACENT SURFACES. FOLLOWING COMPLETION OF PAINTING OF EACH SPACE OF AREA, REINSTALL REMOVED ITEMS.
10. CLEAN SURFACES TO BE PAINTED BEFORE APPLYING PAINT OR SURFACE TREATMENTS.
11. PAINT APPLICATION TO WALLBOARD MAY BE BRUSH, ROLLER OR AIRLESS SPRAY OR BRUSH. APPLY PAINT IN ACCORDANCE WITH MANUFACTURERS DIRECTIONS.
12. APPLY ADDITIONAL COAT OR STAIN-KILL PRIMER WHEN STAINS OR OR OTHER CONDITION SHOWS THROUGH FINAL COAT OF PAINT UNTIL PAINT FILM IS OF UNIFORM FINISH, COLOR AND APPEARANCE. GIVE SPECIAL ATTENTION TO INSURE THAT SURFACES INCLUDING EDGES CORNERS CREVICES WELDS AND EXPOSED FASTENERS RECEIVE A DRY FILM THICKNESS EQUIVALENT TO THAT OF FLAT SURFACES.
13. APPLY FIRST COAT MATERIAL TO SURFACES THAT HAVE BEEN CLEANED PRETREATED OR OTHERWISE PREPARED FOR PAINTING AS SOON AS PRACTICAL AFTER PREPARATION AND BEFORE SUBSEQUENT SURFACE DETERIORATION.
14. ALLOW SUFFICIENT TIME BETWEEN SUCCESSIVE COATING TO PERMIT PROPER DRYING.
15. MINIMUM COATING THICKNESS: APPLY MATERIALS AT NOT LESS THAN MANUFACTURERS RECOMMENDED SPREADING RATE.
16. PRIME COATS: APPLY PRIME COAT OF PAINT TO MATERIAL WHICH IS REQUIRED TO BE PAINTED OR FINISHED AND WHICH HAS NOT BEEN PRIME COATED BY OTHERS.
17. UPON COMPLETION OF PAINTING WORK REMOVE SPATTERED PAINT BY PROPER METHODS OF WASHING AND SCRAPING USING CARE NOT TO SCRATCH OR OTHERWISE DAMAGE FINISHED SURFACES.
18. AT THE COMPLETION OF WORK OF OTHER TRADES, TOUCHUP AND RESTORE ALL DAMAGED OR DEFACED SURFACES.

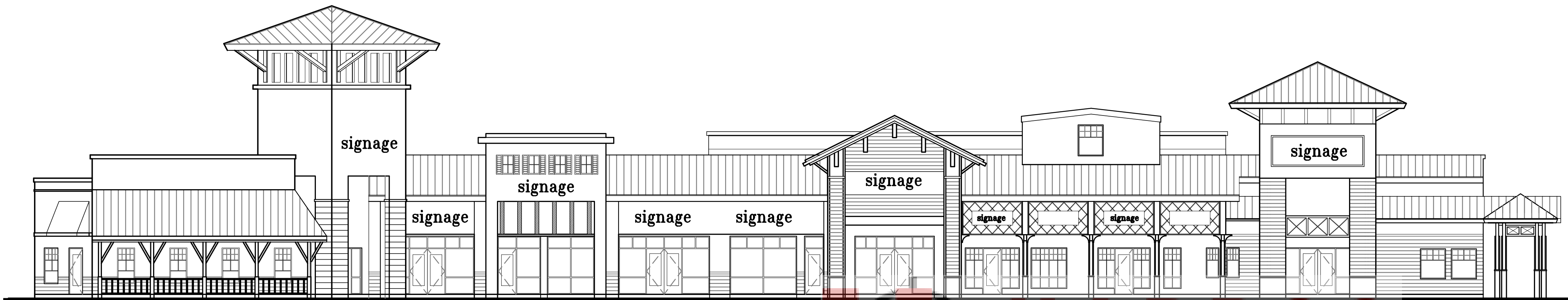
F. SHEET VINYL AND VINYL BASE

1. RUBBER WALL BASE TO BE INSTALLED IN ALL AREAS UNLESS SPECIFICALLY NOTED OTHERWISE IN DRAWINGS.



SITE MAP

SCALE: NOT TO SCALE



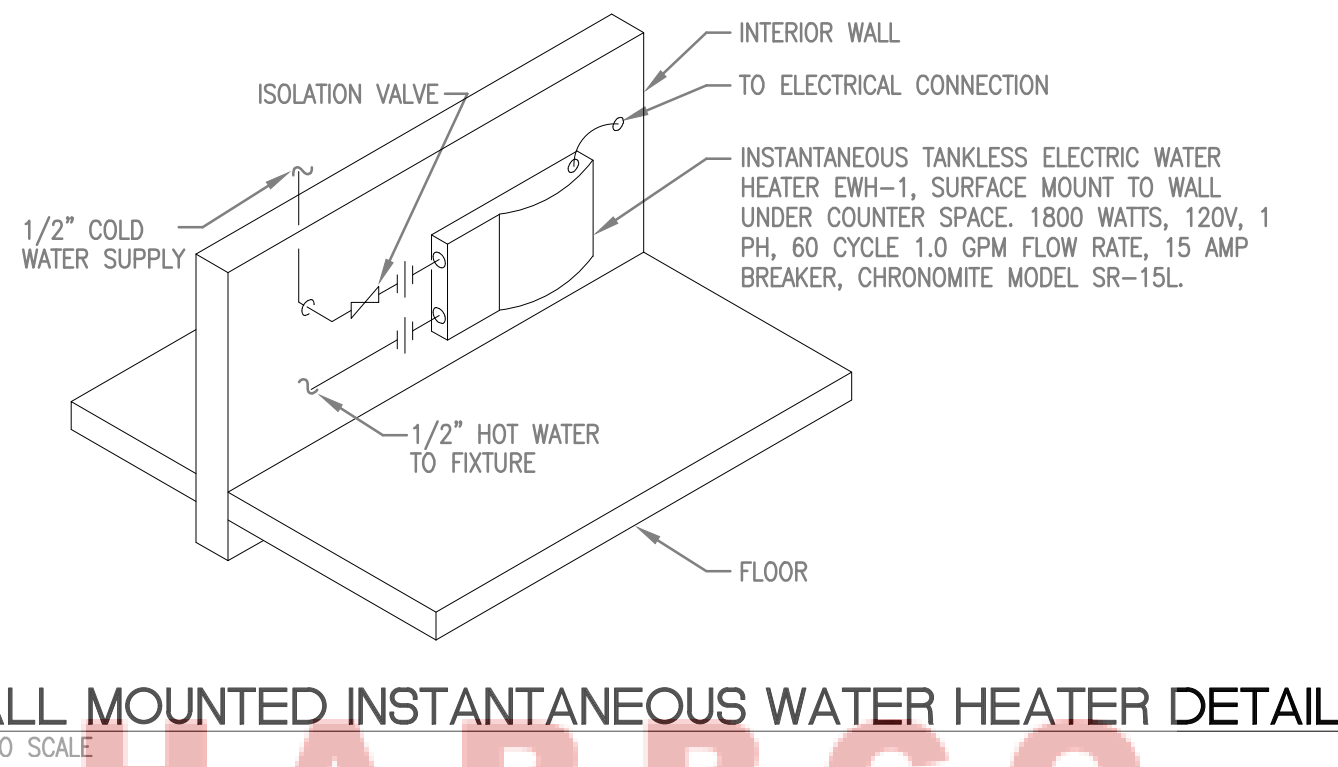
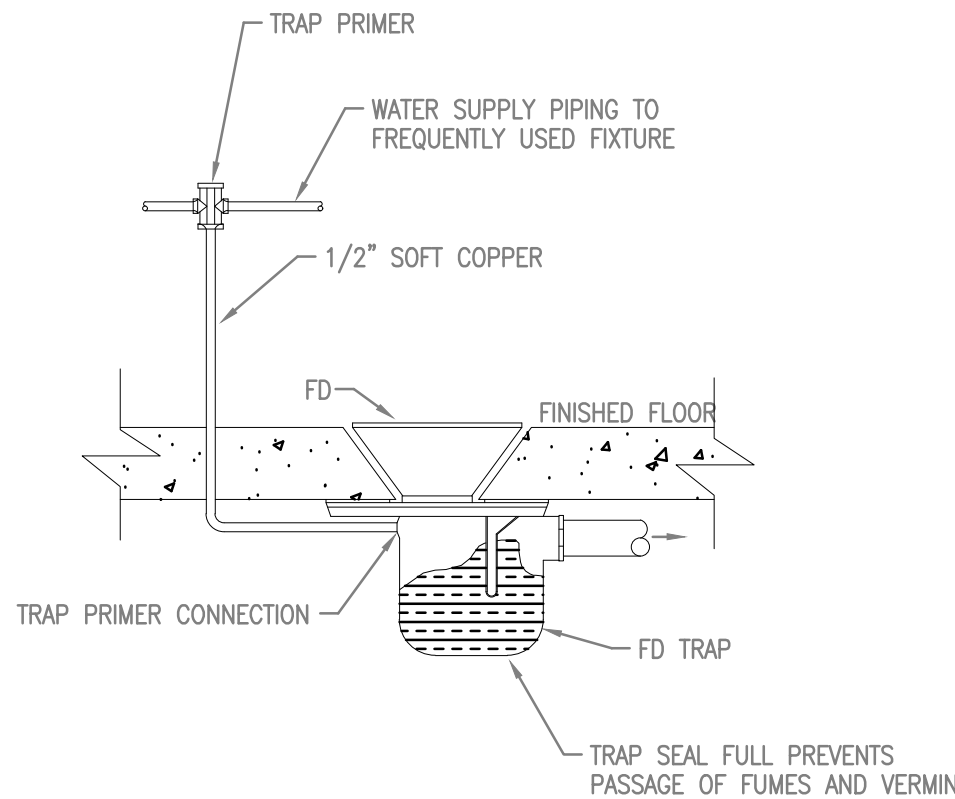
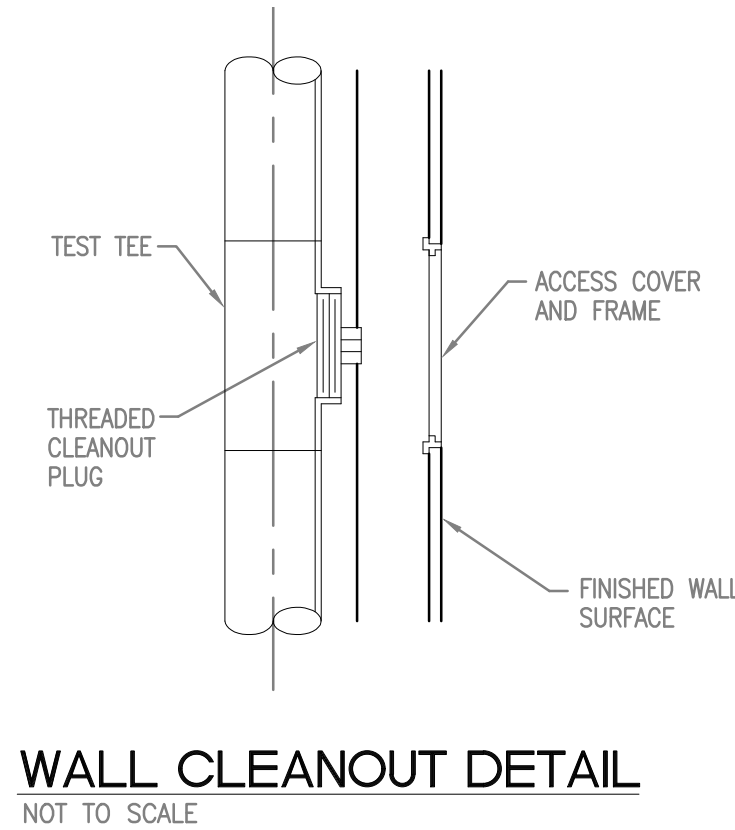
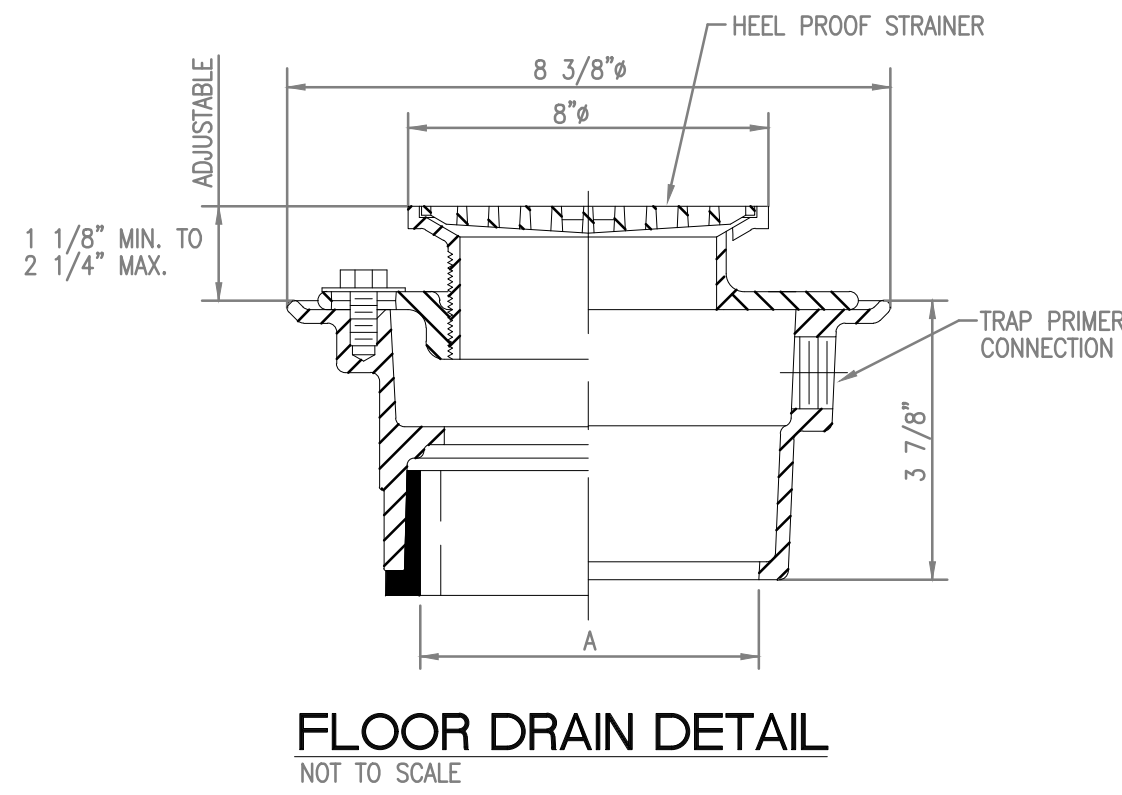
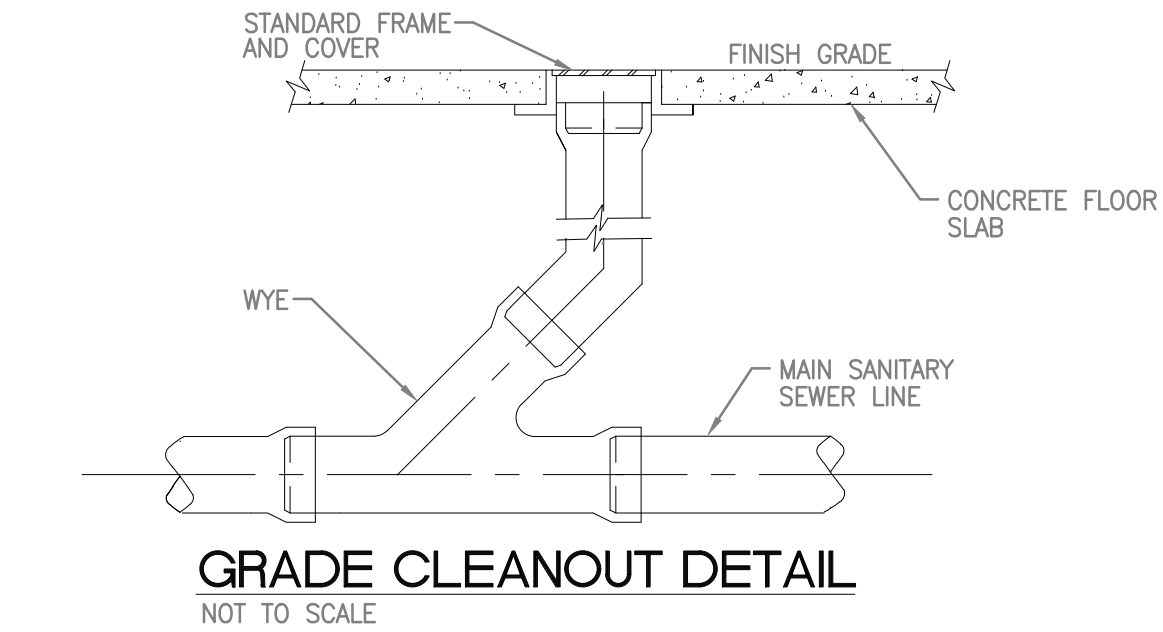
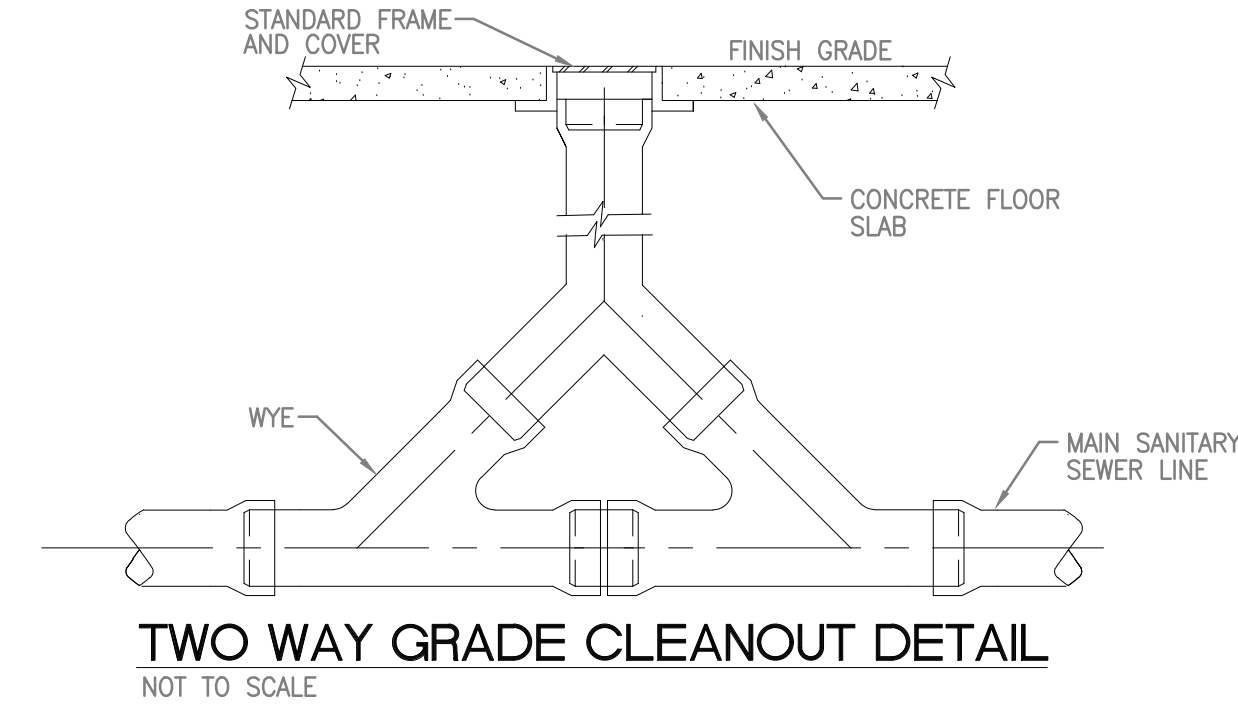
HARB
GENERAL CONTRACTORS, INC.

PLANTATION PLAZA
HWY 27
LEESBURG, FLORIDA



11-01-19-BLDG REVIEW CHANGES
03-18-21-BLDG REVIEW CHANGES
05-06-21-BLDG REVIEW CHANGES
10-21-21-BLDG REVIEW CHANGES

Project: 19-019



PLUMBING SYMBOL LEGEND					
-----	SANITARY WASTE LINE- BELOW FLOOR	— A —	AIR LINE	WC	WATER CLOSET
=====	SANITARY WASTE LINE- ABOVE FLOOR	○	PIPE ELBOW UP	U	URINAL
-----	SANITARY VENT LINE	C	PIPE ELBOW DOWN	L	WALL MOUNTED LAVATORY
-----	DOMESTIC COLD WATER	WCO	WALL CLEANOUT	L	COUNTER TOP LAVATORY
-----	DOM. HOT WATER 140° F	FCO	FLOOR CLEANOUT	↔	BALL VALVE
-----	DOMESTIC HOT WATER RECIRCULATED	GCO	GROUND CLEANOUT	↔	BALL/BUTTERFLY VALVE
---T---	TEMPERED WATER 100° F	VTR	VENT THRU ROOF	↔	CHECK VALVE
---F---	FILTERED WATER	RL	ROOF LEADER	↔	INLINE PUMP
---S---	SOFT WATER	RD	ROOF DRAIN	↔	UNION
---SD---	STORM DRAIN -- BELOW FLOOR	FD	FLOOR DRAIN	↔	TEMP. & PRESSURE RELIEF VALVE
---SD---	STORM DRAIN -- ABOVE FLOOR	HD	HUB DRAIN	↔	COCK
---GR---	GREASE WASTE LINE- BELOW FLOOR	→	POINT OF CONNECTION NEW TO EXISTING	↔	GAS COCK
---COND---	CONDENSATE DRAIN	HB	HOSE BIBB	↔	WATER ARRESTOR
---G---	NATURAL GAS LINE	HBR	HOSE BIBB RECESSED	↔	BALANCING VALVE

PLUMBING ABBREVIATIONS					
AAV	AIR ADMITTANCE VALVE	EFF	EFFICIENCY	PW	POWER WASH
AD	AREA DRAIN	ESE	EMERGENCY SHOWER/ EYEWASH	RWL	RAIN WATER LEADER
ADR	AIR DRIER (COMPRESSED AIR)	EWB	ELECTRIC WATER HEATER	S	SINK
AF	AIR FILTER (COMPRESSED AIR)	EWG	ELECTRIC WATER COOLER	SR	SANITARY RISER DIAGRAM
AFF	ABOVE FINISHED FLOOR	FL	FLOOR	SD	STORM DRAIN
AR	AIR RISER DIAGRAM	FS	FLOOR SINK	SE	SEWAGE EJECTOR
BTU	BRITISH THERMAL UNIT	GPH	GALLON PER HOUR	SH	SHOWER
CA	COMPRESSOR (COMPRESSED AIR)	GR	GAS RISER DIAGRAM	SS	SERVICE SINK
CLG	CEILING	HD	HUB DRAIN	STR	STORM RISER DIAGRAM
CHDW	CHILLER, DRINKING WATER	HW	HOT WATER	TEMP	TEMPERATURE
CS	COUNTER SINK	KS	KITCHEN SINK	TW	TEMPERED WATER
CW	COLD WATER	KW	KILOWATT	UR	URINAL
°F	DEGREES FARENHEIT	LAV, L	LAVATORY	WC	WATER CLOSET
C.O.	CLEAN OUT	MBH	MEGA BTU PER HOUR	W/	WITH
DISP	DISPOSER	MS	MOP SINK	WHE	WATER HEATER, ELECTRIC
DN	DOWN	NIC	NOT IN CONTRACT	WHG	WATER HEATER, GAS
DF	DRINKING FOUNTAIN	OD	OVER FLOW DRAIN	WF	WATER FILTER
Δ	TEMP. DIFFERENCE IN °F	PC	PUMP, CIRCULATING (DOMESTIC HOT WATER)	WR	WATER RISER DIAGRAM
DWG	DRAWING	PD	PLANTER DRAIN	WS	WATER SOFTENER
EDF	ELECTRIC DRINKING FOUNTAIN	PS	PUMP, SUMP		

PLUMBING FIXTURE CONNECTION SCHEDULE						
SYMBOL	DESCRIPTION	CW	HW	WASTE	VENT	REMARKS
WC-1	WATER CLOSET	1"	--	3"	2"	HANDICAP
L-1	LAVATORY	1/2"	1/2"	1 1/2"	1 1/4"	COUNTER
EWG-1	ELECTRIC WATER COOLER	1/2"	--	1 1/4"	1 1/4"	HANDICAP
HB-1	HOSE BIBB	3/4"	--	--	--	RECESSED

PLUMBING FIXTURE SCHEDULE

WC-1 WATER CLOSET: FLOOR MOUNTED, BATTERY OPERATED INFRARED SENSOR ELECTRONIC FLUSH VALVE, WATER SAVER 1.6 GPF, SIPHON JET, ELONGATED, WHITE OPEN FRONT SEAT, WHITE VITREOUS CHINA, AMERICAN STANDARD "MADERA" 2234.015, CHURCH 9500C SEAT, ZURN EXPOSED ZR-6000XL-WS1 FLUSH VALVE.

WC-2 HANDICAP WATER CLOSET: FLOOR MOUNTED, BATTERY OPERATED INFRARED SENSOR ELECTRONIC FLUSH VALVE, WATER SAVER 1.0 GPF, WHITE VITREOUS CHINA, FLOOR MOUNTED CARRIER, AMERICAN STANDARD "WASHERBROOK" 6501.010 ZURN ZR-1222 CARRIER, ZURN ZR-6003XL-WS1 EXPOSED FLUSH VALVE, MOUNTED AT ADA APPROVED HANDICAP ACCESSIBLE HEIGHT.

UR-1 HANDICAP URINAL: WALL HUNG, BATTERY OPERATED INFRARED ELECTRONIC SENSOR FLUSH VALVE, WATER SAVER 1.0 GPF, WHITE VITREOUS CHINA, FLOOR MOUNTED CARRIER, AMERICAN STANDARD "WASHERBROOK" 6501.010 ZURN ZR-1222 CARRIER, ZURN ZR-6003XL-WS1 EXPOSED FLUSH VALVE, MOUNTED AT ADA APPROVED HANDICAP ACCESSIBLE HEIGHT.

L-1 LAVATORY: 20" X 17" OVAL, COUNTER MOUNTED, SELF RIMMING, WHITE VITREOUS CHINA, BATTERY POWERED INFRARED SENSOR ELECTRONIC FAUCET, FLAT GRID STRAINER, BRASS P-TRAP, SUPPLIES WITH STOP, AMERICAN STANDARD AQUALYN 0476-028 WITH ZURN Z-6910 FAUCET.

L-2 HANDICAP LAVATORY: 20" X 18", WALL HUNG, WHITE VITREOUS CHINA, BATTERY POWERED INFRARED SENSOR ELECTRONIC FAUCET, FLAT GRID STRAINER, BRASS P-TRAP, SUPPLIES WITH STOP, AMERICAN STANDARD LUCERNE 0355.012 WITH ZURN Z-6910 FAUCET. INSULATE HOT WATER AND WASTE PIPING BELOW LAVATORY.

EWG-1 ELECTRIC WATER COOLER: WALL HUNG, HANDICAP ACCESSIBLE, STAINLESS STEEL, FRONT AND SIDE PUSH BARS, SUPPLY WITH STOP, BRASS P-TRAP, 6.7 GPH OF 50 DEGREE WATER, 350 WATT, 4.5 FLA, 115 VOLT, 1 PHASE, 60 CYCLE. HALSEY-TAYLOR BFC-8FS.

FD-1 FLOOR DRAIN: 6" STRAINER DIAMETER, CAST IRON BODY WITH BOTTOM OUTLET, COMBINATION INVERTIBLE MEMBRANE CLAMP, ADJUSTABLE TYPE B NICKEL BRONZE STRAINER, TRAP PRIMER CONNECTION, ZURN Z-415-P.

RD-1 ROOF DRAIN: COMBINATION MAIN DRAIN AND OVERFLOW DRAIN, CAST IRON BODY, COMBINATION MEMBRANE FLASHING CLAMP/GRAVEL GUARD, DECK PLATE, LOW SILHOUETTE POLY-DOME, UNDERDECK CLAMP, ZURN Z-163-ES.

MS-1 MOP SINK: 24" X 24" X 10" MOLDED STONE, FLOOR MOUNTED, WITH WALL MOUNTED FAUCET WITH 3/4" HOSE THREAD SPOUT, INTEGRAL STOPS, WALL BRACKET, FAUCET WITH PAIL HOOK AND VACUUM BREAKER, HOSE AND HOSE BRACKET, MOP HANGER, STAINLESS STEEL FLAT GRID STRAINER, WALL GUARD AND EDGE GUARD. FIAT MSB-2424, 830-AA SERVICE FAUCET, 832-AA HOSE AND BRACKET, 889-CC MOP HANGER, 1453-BB STRAINER, MSG 2424 WALL GUARD, E-88-AA EDGE GUARD.

HB-1 HOSE BIBB: RECESSED, WALL MOUNTED IN BRASS BOX WITH LOCKING COVER, BRASS, CHROME PLATED, VACUUM BREAKER, 3/4" HOSE THREAD SPOUT, REMOVABLE KEY. WOODFORD MODEL B-24 OR ZURN Z-1335

S-1 STRAINER: BRONZE BODY, Y-TYPE DOMESTICALLY MANUFACTURED, 125 PSI RATED, 100 MESH STAINLESS STEEL SCREEN. SIZE TO MATCH WATER LINE IT IS SERVING. WILKINS YB-100.

WATER ARRESTOR EQUAL TO ZURN SHOCKTROL MODEL Z-1700, 65 PSI MAX. RATING MAX. PIPING LENGTH COVERED BY ONE ARRESTOR. SHALL BE 20 LINEAL FT.

TYPE "A" = 11 FU MAX, TYPE "B" = 30 FU MAX, TYPE "C" = 60 FU MAX.

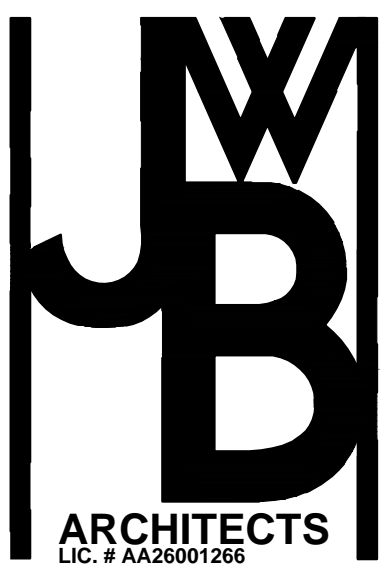
ALL WATER ARRESTERS SHALL BE TYPE "A" UNLESS OTHERWISE SHOWN.

WCO WALL CLEANOUTS: EQUAL TO: FINISHED AREAS ZURN, ZN-1460-2VP 8X8 UNFINISHED AREAS ZURN, ZN-1460-9VP 7"

FCO FLOOR CLEANOUTS: EQUAL TO: FINISHED AREAS ZURN, ZN-24000-2 CARPETED AREAS ZURN, ZN-14000-14 UNFINISHED AREAS ZURN, ZN-1420-27

PLUMBING GENERAL NOTES

- ALL WORK SHALL CONFORM WITH THE 2017 FLORIDA PLUMBING CODE, THE 2017 FLORIDA BUILDING CODE, THE 2017 FLORIDA ACCESSIBILITY CODE AND ALL OTHER APPLICABLE CODES AND STANDARDS.
- ALL HANDICAP FIXTURES SHALL BE MOUNTED IN ACCORDANCE WITH THE AMERICANS WITH DISABILITIES ACT (ADA) AND THE 2017 FLORIDA BUILDING CODE CHAPTER 11 - FLORIDA ACCESSIBILITY CODE FOR BUILDING CONSTRUCTION.
- PRIOR TO START OF CONSTRUCTION, CONTRACTOR SHALL VERIFY EXACT LOCATIONS OF UTILITIES IN FIELD.
- PRIOR TO START OF CONSTRUCTION, CONTRACTOR SHALL VERIFY ALL EXISTING BUILDING CONDITIONS.
- COORDINATE WORK WITH ALL OTHER TRADES TO AVOID INTERFERENCES.
- INSTALL ALL WATER, WASTE AND VENT PIPING IN ACCORDANCE WITH ALL APPLICABLE CODES.
- SOIL, WASTE AND VENT PIPING SHALL BE SCHEDULE 40 PVC IN ACCORDANCE WITH ASTM D 2665. PVC PIPE FITTINGS SHALL BE IN ACCORDANCE WITH ASTM D 3311. JOINTS SHALL BE SOLVENT CEMENTED IN ACCORDANCE WITH ASTM D 2855 USING SOLVENT CEMENT IN COMPLIANCE WITH ASTM D 2564.
- REFER TO ARCHITECTURAL DRAWINGS FOR EXACT LOCATIONS AND MOUNTING HEIGHTS OF ALL PLUMBING FIXTURES.
- ALL PIPING SHALL BE CONCEALED WITHIN THE CEILING SPACE, WALLS AND CHASES AS SHOWN ON PLANS.
- ALL EXPOSED PIPING AT PLUMBING FIXTURES SHALL BE CHROME PLATED BRASS WITH ESCUTCHEON PLATES AT THE WALL, FLOOR OR CEILING PENETRATIONS.
- ALL ABOVE SLAB COLD WATER, HOT WATER AND TEMPERED WATER PIPING SHALL BE SCHEDULE 40 CPVC IN ACCORDANCE WITH ASTM F 441. PIPE FITTINGS SHALL BE IN ACCORDANCE WITH ASTM F 483. JOINTS SHALL BE SOLVENT CEMENTED IN ACCORDANCE WITH ASTM D 2846 USING SOLVENT CEMENT IN COMPLIANCE WITH ASTM F 493.
- ALL BELOW SLAB COLD WATER, HOT WATER AND TEMPERED WATER PIPING SHALL BE TYPE "K" COPPER.
- INSULATE ALL HOT WATER AND TEMPERED WATER PIPING WITH 3/4" FOAM RUBBER INSULATION (ARMA FLEX).
- INSULATE ALL EXPOSED PIPES AND SURFACES UNDER ACCESSIBLE LAVATORIES PER ADA 4.19.4 AND ANSI-A117.1. PROVIDE ONE PIECE PROTECTOR WITH FULL ROTATION OPTION CONSISTING OF INTERNAL GROOVE LOCKING RING FOR NON SEPARATION AND EXTERNAL LOCKING RING WITH STAINLESS STEEL SECURITY SCREW TO INSURE EXTRA LONG TERM TAMPER RESISTANCE ANTIMICROBIAL U.V. INHIBITED UNIVERSAL FIT, 3-M DUAL LOCK (TM) FASTENERS SECURED WITH SELF LOCKING APPROVED NYLON STRAPS. FURNISH ONE PIECE VALVE/ANGLE STEP PROTECTOR, ONE PIECE OFFSET PROTECTOR AND ONE PIECE P-TRAP PROTECTOR. PRO-XTREME BY PLUMBEREX.
- ALL PIPING SHALL BE FIRMLY ANCHORED AND SUPPORTED TO PREVENT SWAY AND VIBRATION THE ENTIRE LENGTH.
- CONTRACTOR SHALL FURNISH AND INSTALL WATER SHOCK ARRESTERS EQUAL TO ZURN SHOCKTROL AS SHOWN ON PLANS AND AS PER MANUFACTURER'S RECOMMENDATIONS. AIR CHAMBERS SHALL NOT BE SUBSTITUTED FOR FACTORY FABRICATED WATER SHOCK ARRESTORS.
- ALL FLOOR DRAINS SHALL HAVE TRAP PRIMER CONNECTIONS AND SHALL BE SUPPLIED FROM AUTOMATIC TRAP PRIMERS CONNECT TO THE NEAREST SINK. RUN 1/4" SOFT COPPER TUBING FROM TRAP PRIMERS TO FLOOR DRAIN TRAP PRIMER CONNECTION. TRAP PRIMERS SHALL BE EQUAL TO ZURN "SANI-GUARD" MODEL Z-1022.
- FURNISH SUPPLIES WITH STOP VALVES FOR ALL PLUMBING FIXTURES.
- ALL SHUT-OFF VALVES SHALL BE BALL VALVES.
- ALL WATER PIPING SHALL BE SLOPED TO DRAIN.
- ALL SOIL, WASTE, AND VENT PIPING SHALL BE SLOPED 1/4" PER FOOT (2%) FOR PIPES 2 1/2" AND SMALLER AND 1/8" PER FOOT (1%) FOR PIPES 3" AND LARGER.
- PROVIDE DIELECTRIC UNIONS AT ALL CONNECTIONS OF DISSIMILAR METALS.
- SEAL ALL PENETRATIONS OF FIRE RATED PARTITIONS WITH FIRE RATED STOPPING MATERIAL.
- ALL ROOF DRAIN PIPING SHALL BE CAST IRON HUB AND SPIGOT IN ACCORDANCE WITH ASTM A74. ALL JOINTS SHALL BE CAULKED WITH OAKUM OR HEMP AND MOLTEN LEAD SHALL BE POURED TO DEPTH OF NOT LESS THAN 1" AND CAULKED TIGHT WITH ACID RESISTANT ROPE OR CEMENT.
- ALL ROOF DRAIN LINES (PRIMARY AND SECONDARY) IN THE CEILING SPACE SHALL BE WRAPPED WITH 1" ALUMINUM FACED BATT INSULATION. ALL ROOF DRAINS LINES SHALL SLOPE A MINIMUM OF 1/4" PER PER LINEAL FOOT
- PROVIDE 12"x12" ACCESS DOORS ON ALL NON-ACCESSIBLE CEILINGS AND WALLS FOR VALVES



2295 S. HIAWASSEE RD.
SUITE 304
ORLANDO, FLORIDA 32835
PH: 407.298.5020
FX: 407.298.5030

Owner:

ALI JAWAD

LEGENDS, NOTES AND SCHEDULES - PLUMBING

PLANTATION PLAZA
HWY 27
LEESBURG, FLORIDA

Architect of Record
John W. Burt - AR93163

Revisions:

Date:
06-05-2019

Drawn By:
RR

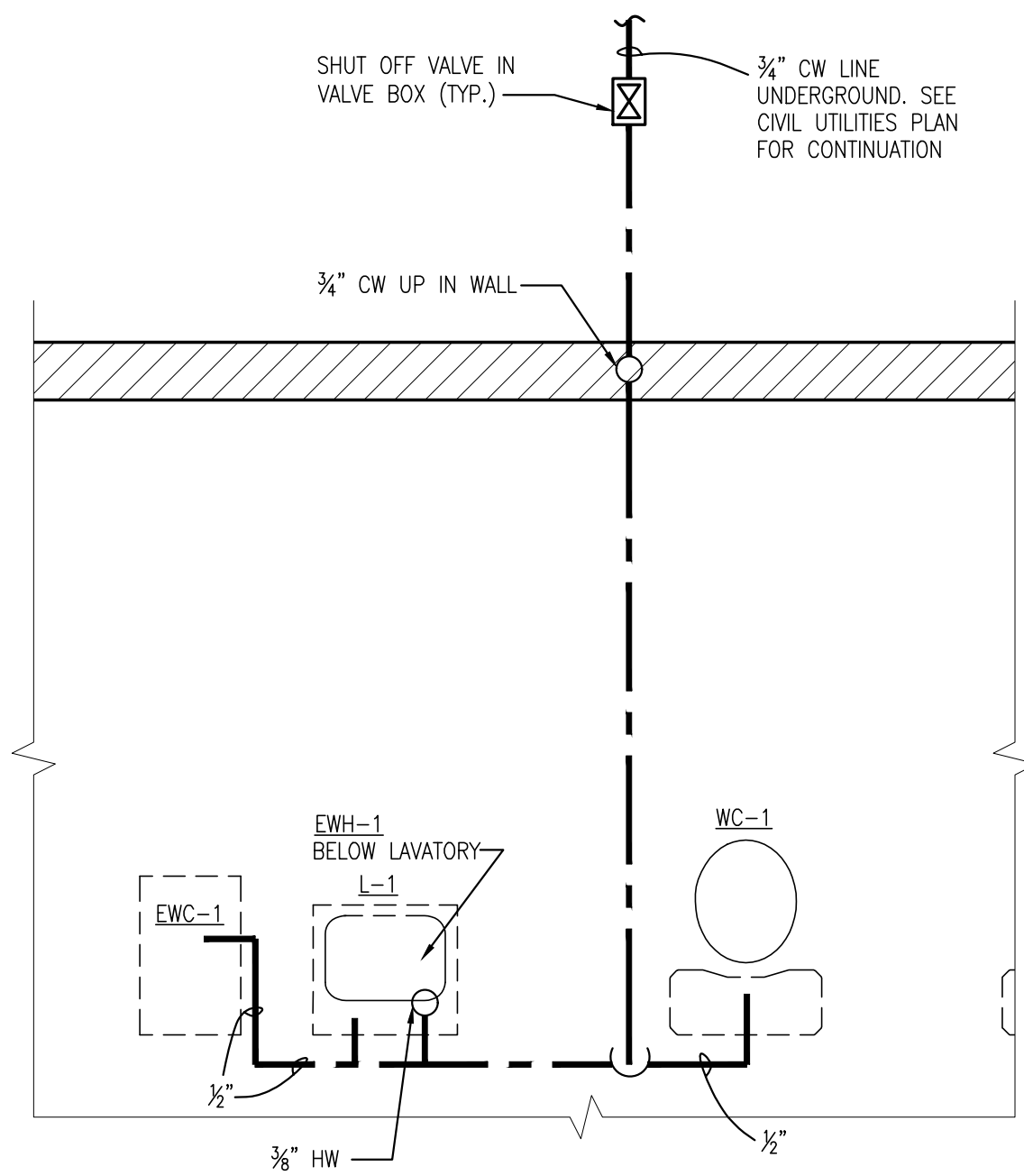
Checked By:
JWB

Project No.
19-019

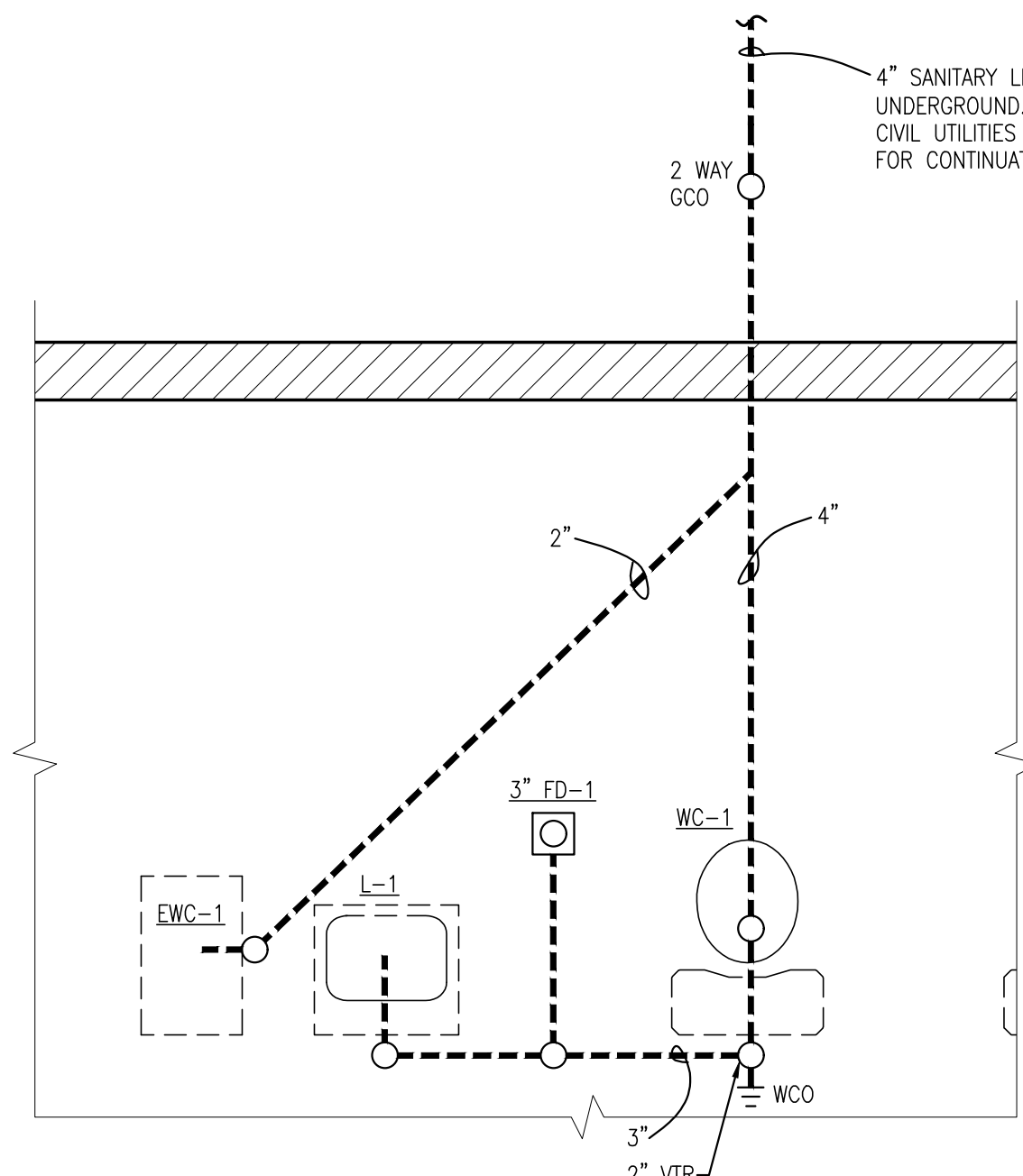
Sheet No.

P100

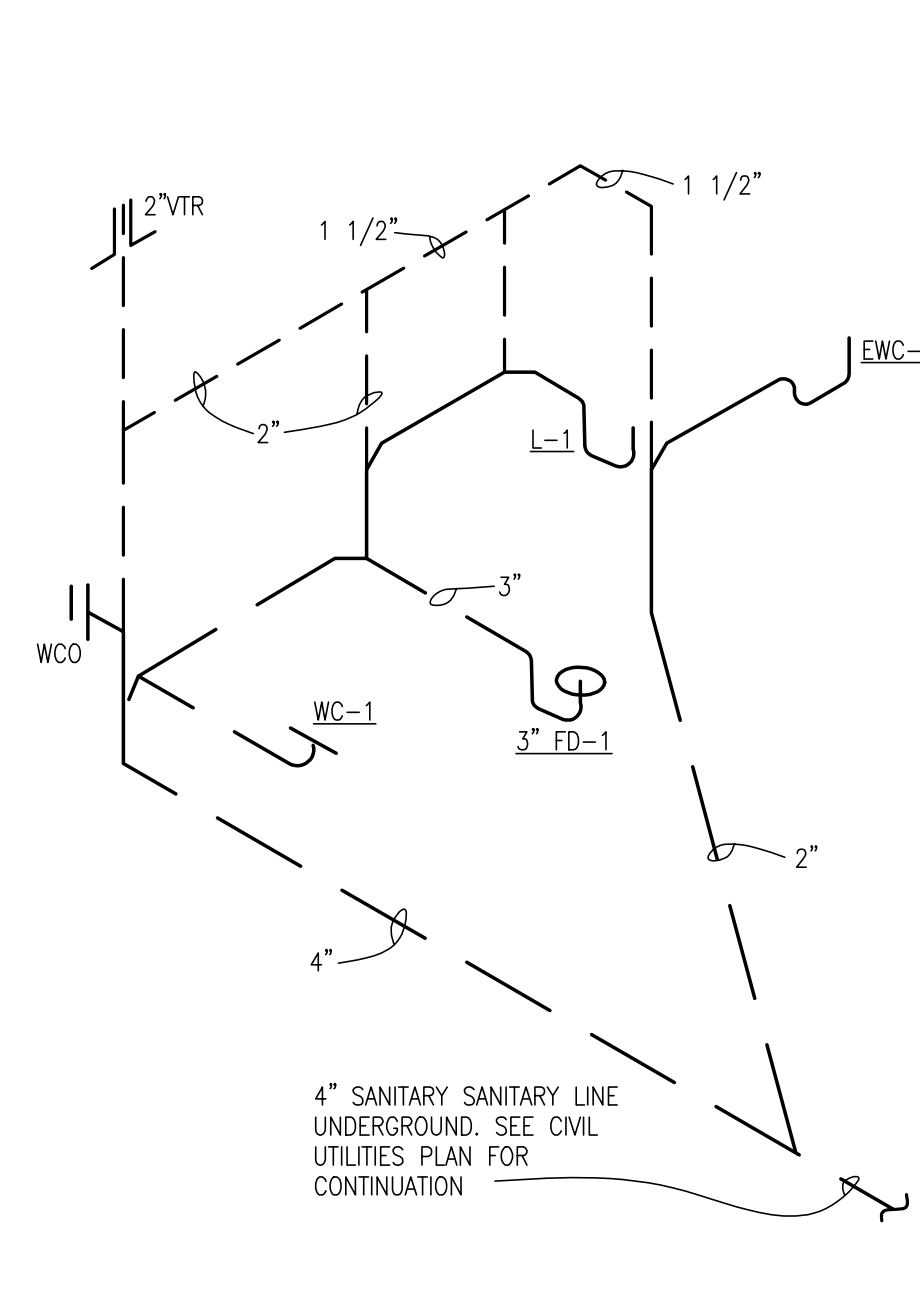
LAKE COUNTY BUILDING SERVICES
This document must be on jobsite for inspections.
This document was reviewed for code compliance; this does not relieve the applicant from correcting errors and omissions and complying with the current Florida Building Code.



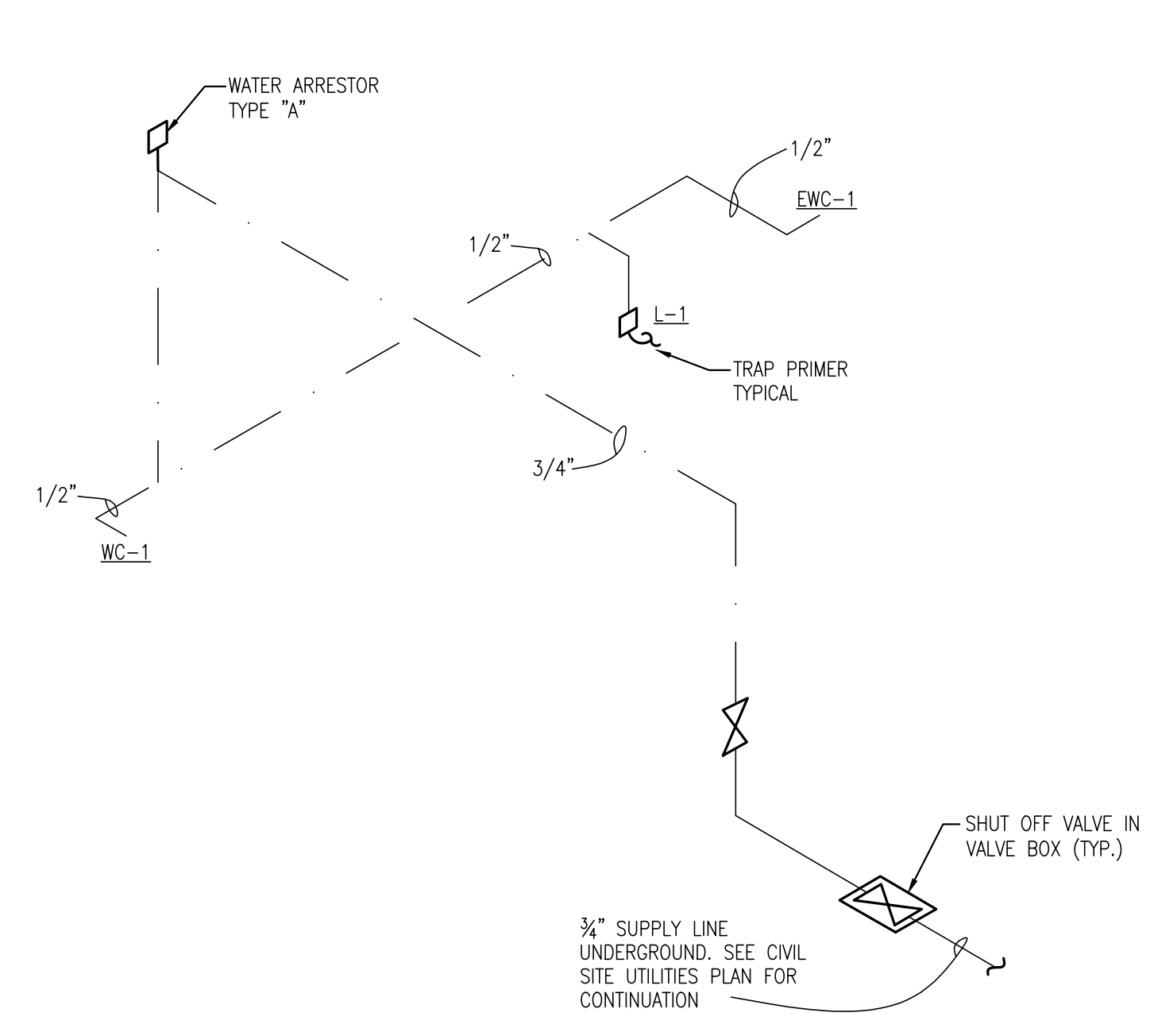
2
P201 **TYPICAL RESTROOM WATER PLAN**
SCALE: 1/2" = 1' - 0"



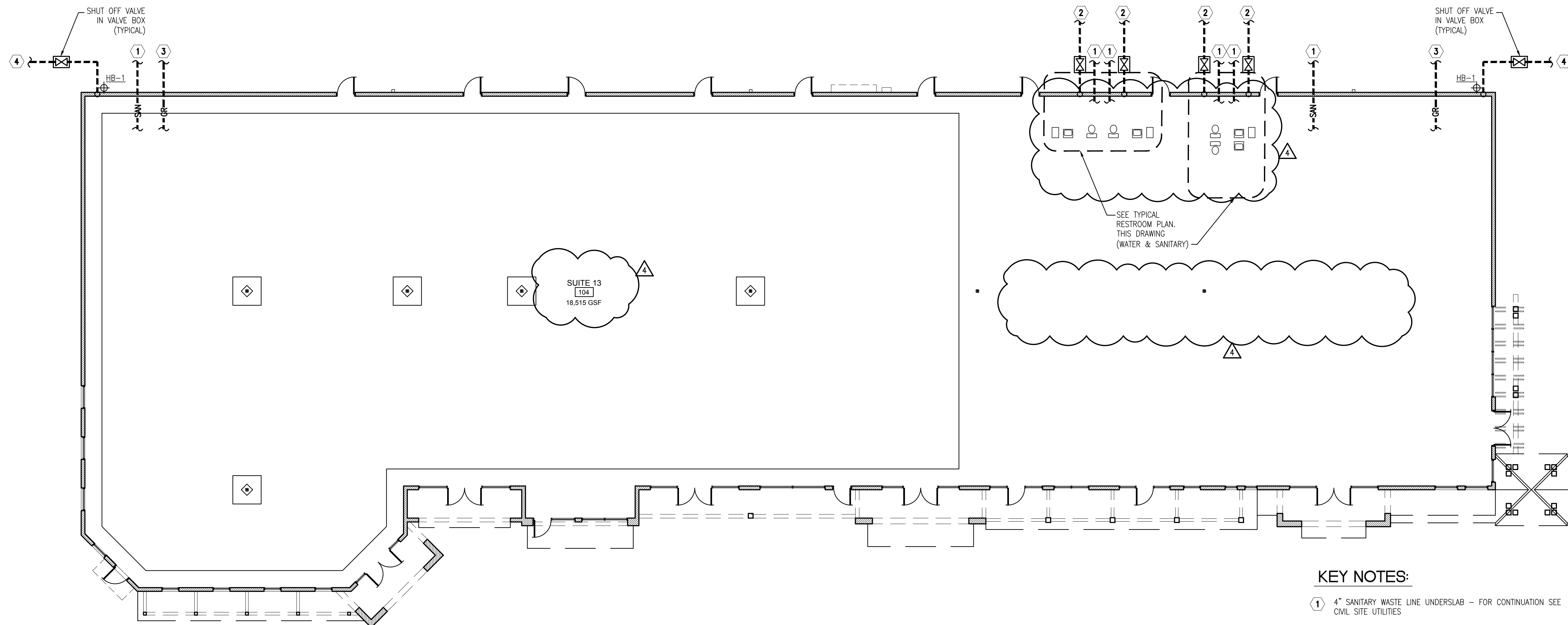
3
P201 **TYPICAL RESTROOM SANITARY PLAN**
SCALE: 1/2" = 1' - 0"



4
P201 **TYPICAL SANITARY RISER DIAGRAM**
SCALE: NOT TO SCALE



5
P201 **TYPICAL WATER RISER DIAGRAM**
SCALE: NOT TO SCALE



ALL DETAILS FOR REFERENCE ONLY
SCOPE OF WORK SHALL BE PLUMBING
STUB-UPS AT INTERIOR SIDE.



KEY NOTES:

- ① 4" SANITARY WASTE LINE UNDERSLAB - FOR CONTINUATION SEE CIVIL SITE UTILITIES
- ② 3/4" DOMESTIC WATER SUPPLY LINE UNDERGROUND - FOR CONTINUATION SEE CIVIL SITE UTILITIES PLAN
- ③ 6" GREASE WASTE RUN UNDERGROUND TO NEW GREASE INTERCEPTORS. SEE CIVIL SITE UTILITIES PLAN FOR CONTINUATION. RUN GREASE LINES SEPARATELY TO OUTSIDE OF BUILDING
- ④ 3/4" DOMESTIC WATER SUPPLY LINE UNDERGROUND - FOR CONTINUATION SEE CIVIL SITE UTILITIES PLAN